



WAVES SOUNDGRID COMBO

Quick Start Guide

 WAVESLIVE

What's in the package:

- **Waves SoundGrid Server:** An application dedicated computer that provides powerful low latency audio plug-in processing.
- **WSG-Y16 Card:** a **mini-YGDAI I/O Card** that pipes 16 channels of audio (at 44.1/48kHz sample rates) between your Yamaha console and MultiRack SoundGrid, plugs into any of the expansion slots on your Yamaha console.
- **Gigabit Switch:** a gigabit network switch that connects all of the components of your SoundGrid network: SoundGrid Server, WSG-Y16 card, and Host Computer. *
- **3 x Cat 6 Network Cables:** Use the cables to wire all of the components of your SoundGrid network together: SoundGrid Server, WSG-Y16 card, Gigabit Switch, and Host Computer.*
- **iLok:** a USB device that stores your Waves plugin licenses, required to enable Waves plugins for operation. Transfer your licenses to your iLok and keep it connected to your Host Computer when using MultiRack.
- **Waves USB Key:** Use the included software installer to install MultiRack SoundGrid application and plug-ins.

* Host Computer not included

Please keep this guide for future reference.

Useful Contacts

Waves Tech Support : 1-865-909-9200 ext. 1

Table of Contents

1. Installing the Software on Your Computer
 - a. Installing MultiRack SoundGrid, Plugins and SG Driver
 - b. Downloading your licenses to your iLok USB key
2. Connecting the SG System to Your Console
 - a. Installing the WSG-Y16 in your console
 - b. Connecting everything together (via Ethernet)
3. Setting Up the Software
 - a. SG Server software and WSG-Y16 firmware update.
 - b. Setting up the Driver if recording/playback is needed.
 - c. Setting up MultiRack preferences.
 - d. Setting SoundGrid Inventory.
 - e. Setting SoundGrid Connections.

1. Installing the Software on Your Host Computer

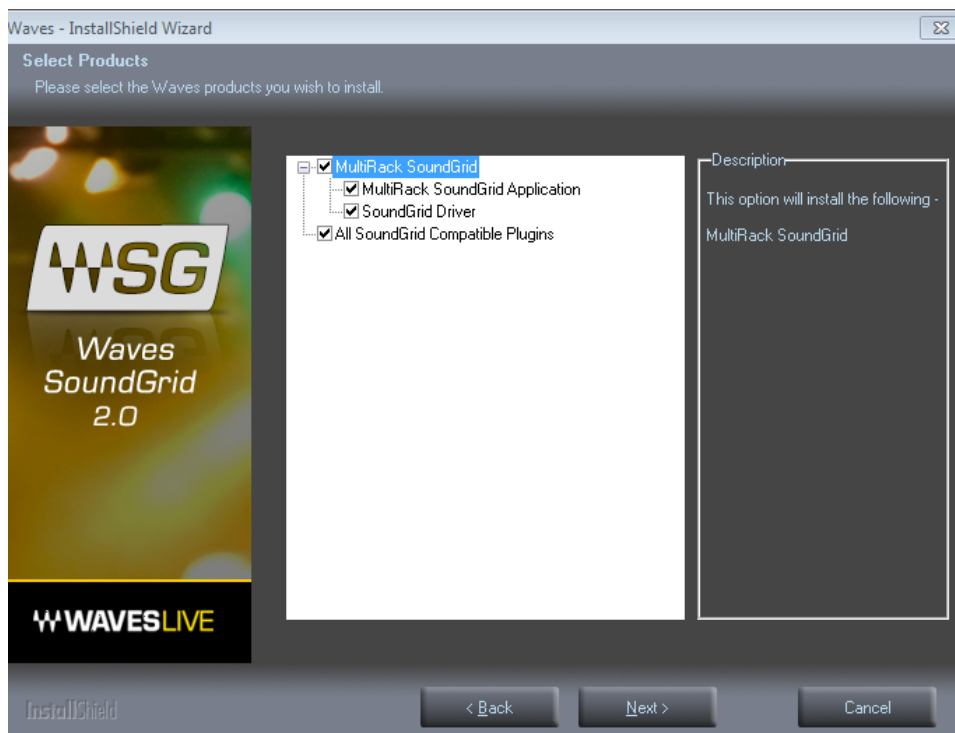
a) Installing MultiRack SoundGrid, Plugins and SG Driver

Insert this USB key to your host computer. Start installation by double-clicking the Waves MultiRack_SoundGrid_2 icon:



The installation options menu will open. Choose of the available options:

- MultiRack SoundGrid Application: Installs the Waves host software required to run Waves plugins.
- SoundGrid Driver: An ASIO/CoreAudio driver for PC and Mac. Installation is optional. The driver is required for recording or playback options only, can be installed on separate computer for dedicated playback and/or recording .
- All SoundGrid Compatible plugins: Installs all SoundGrid-compatible plugins .



When installation is done, restart your host computer.

b) Downloading licenses to your iLok USB key

Please register your SoundGrid Combo in your Waves account. Your product serial number can be found on the front underside of the unit. If you don't yet have a Waves account, please create one at <http://register.waves.com>.

To register your SoundGrid Combo:

- Access your Waves account at www.waves.com.
- On the main menu, click **Register Products > Register New Product**.
- Enter your serial number and confirm the registration.
- Upon registration, several separate components will be registered: SoundGrid Server and five plugins: Renaissance Reverb, Renaissance Bass, Renaissance EQ, Renaissance Axx, and H-Delay.

Now it's time to authorize your plugins to your iLok key:

- Click the 'Enter iLok Account User ID' link next to your plugin, then click **Submit**.
- If you don't have an iLok user account, create one at www.ilok.com.
- The license you have submitted is delivered to your [iLok.com](http://www.ilok.com) account.
Note that this process may take a few minutes.
- Repeat these 3 steps for all your plugins.
- Plug your iLok key into any USB port and log in to your account at www.iLok.com.
- If your iLok does not appear under the **Found iLoks** section on the left, install the iLok Driver software, then click the **Update** button.
- Click **Download Licenses** on the left menu.
- Select all Waves license/s and iLok key which you plugged in to authorize.
- Click **Download to iLok**. The licenses are downloaded to your key. Do not unplug the key until the process is completed successfully. When done, your key is authorized.

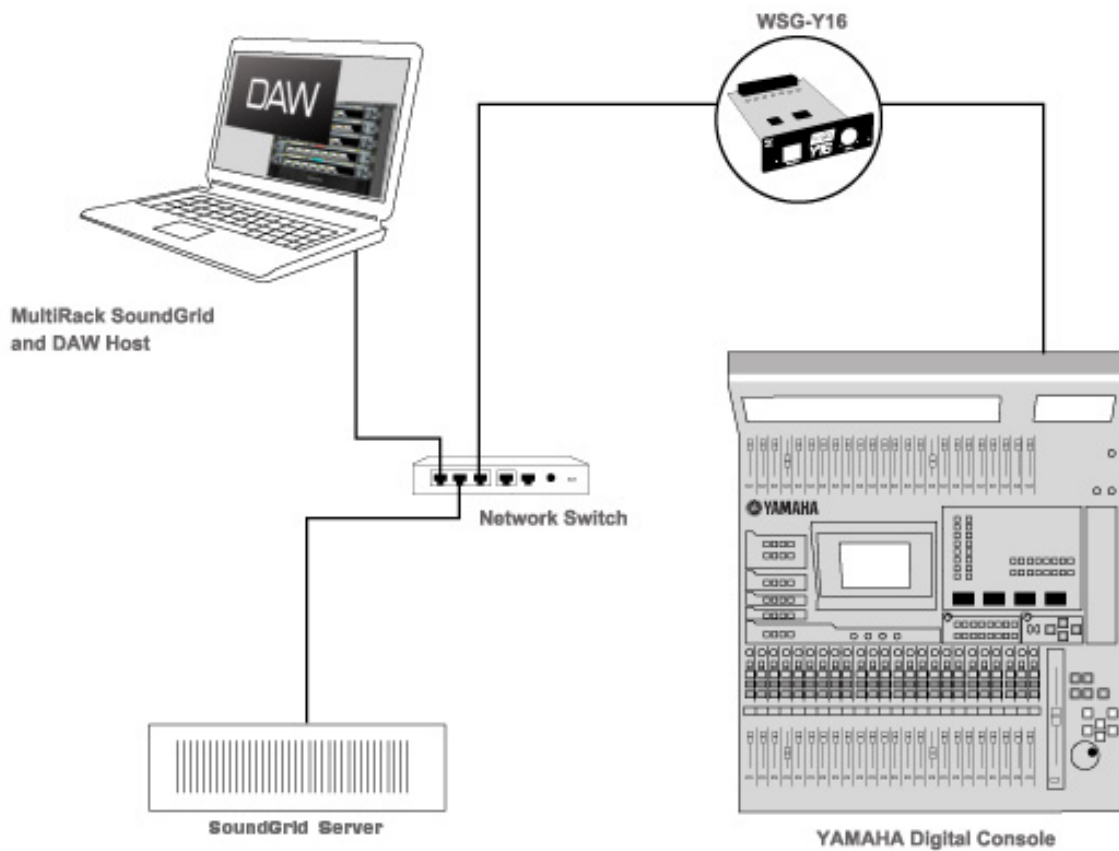
2. Connecting the SG System

a) Installing the WSG-Y16

- Turn your console OFF.
- In the back of your console, unscrew the protective cover from the mini-YGDAI slot you'll be installing to.
- Carefully line up the WSG-Y16 card with the slot guide and slide the card in, following the directional grooves.
- Make sure the card is seated firmly; screw it in for added protection.
- Turn your console back on.

b) Connecting all system components via Ethernet

- Using one of the included Cat 6 network cables, connect the WSG-Y16 Card to the network switch.
- Using another of the included Cat 6 network cables, connect the SoundGrid Server to the network switch.
- Using another of the included network cables, connect your host computer to the network switch.
- Plug your authorized iLok into one of your host computer USB ports.
- Make sure your console, SoundGrid Server, and network switch are powered up.



3. Setting Up the Software

a) SG Server software and WSG-Y16 firmware update

Your card and server have been shipped with the latest firmware/software version already installed.

If MultiRack reports that your card firmware or server software is incompatible: click Edit Menu and choose Inventory. In Inventory window click Update button next to devices requiring updating. Follow prompts to complete update.

Be sure to visit www.WavesLive.com web site periodically for the latest software updates and downloads.

b) Setting up the Driver if recording/playback is needed

SG Driver is used to send and receive audio between SoundGrid devices (WSG-Y16 card and MultiRack) and your DAW for recording and playback.

The following steps assume you have installed the SG Driver. You can install the SG Driver on either the computer you are using to run MultiRack SoundGrid, or another computer. Use the SoundGrid v2 installer on your DVD to install the driver (select the SG Driver option in the installer's first page).

Double-click the SG Driver Control Panel shortcut, located on your desktop or in your Waves program folder.

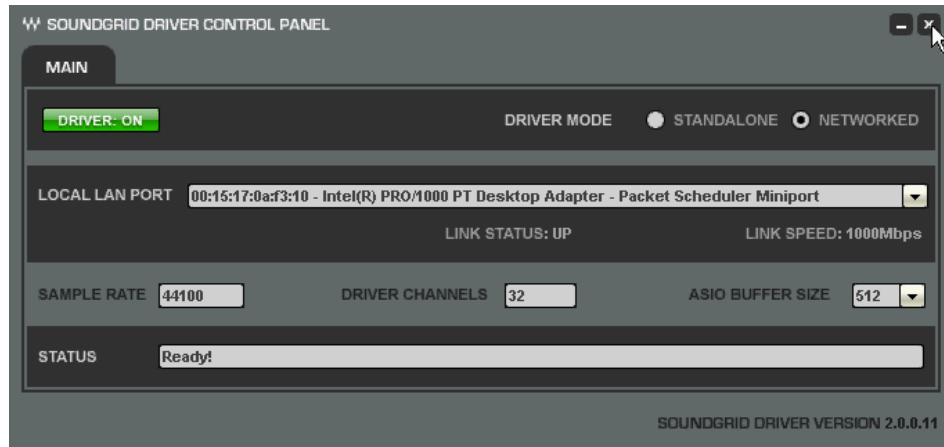
SG Driver works in one of two modes:

- **Networked:** for simultaneous processing, recording and playback.
- **Standalone:** for playback and recording only, without using the Impact Server and MultiRack for processing.

For more information about SG Driver Modes please refer to the Waves SoundGrid V2 manual.

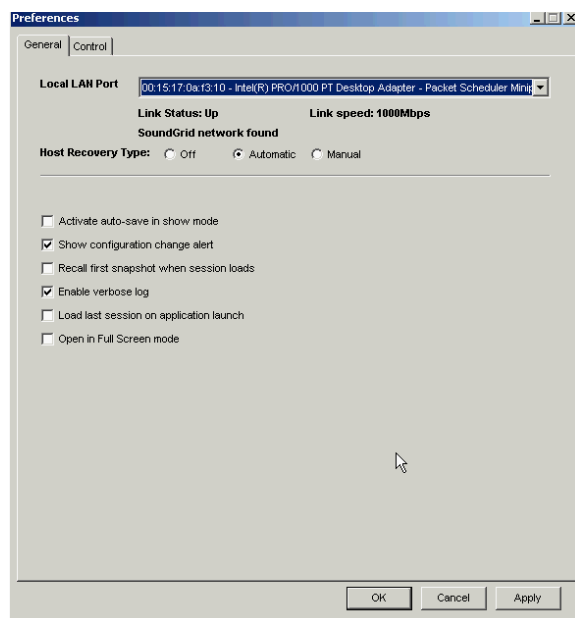
Setting up Networked mode:

- Set the Driver Mode to 'Networked'.
- Under Local LAN port, choose the correct LAN or network adapter.
- Click the Driver button to turn it on.
- Close SG Driver Control Panel.



c) Setting up MultiRack preferences.

- Open the MultiRack application.
- PC: Via the Edit menu, open MultiRack Preferences.
- Mac: Via the MultiRack menu, open the Preferences window.
- Under Local LAN port, choose the correct LAN/network adapter.
- When the correct port is selected, a “SoundGrid network found” message is displayed, as shown below.
- Close Preferences.



d) Setting SoundGrid Inventory:

The Inventory window lists all of the SoundGrid Components on your network and lets you select and assign the devices you are using

- Open the SoundGrid Inventory window from the Edit menu.
- SoundGrid Inventory will list all available devices.
- Under the Assign column, assign ID to your WSG-Y16 Card.
- Under the Name column, name your WSG-Y16 Card for easy identification.
- For DAW recording or playback, choose the desired channel count for SG Driver under channel column.
- Under the Assign column, assign ID to the Impact Server.
- Under Network Latency choose 80 from the menu.
- Under Driver Latency choose 512 from the menu.

The screenshot shows the 'SOUNDGRID INVENTORY' window. At the top, there are 'SYSTEM PARAMETERS' with fields for 'SAMPLE RATE' (44100), 'NETWORK LATENCY' (40), and 'DRIVER LATENCY' (255). Below this is the 'SYSTEM INVENTORY' section with 'TEST REDUNDANCY' and 'REFRESH' buttons. The main part of the window is 'I/O AND PROCESSING DEVICES', which contains a table with columns: ASSIGN, DEVICE, CHAN, NAME, MAC ADDRESS / COMPUTER NAME, STATUS, DEVICE FIRMWARE, and ID. A dropdown menu is open over the 'ASSIGN' column, showing options 1, 2, 3, 4, and -. The table lists three devices: 'IO: Waves IO' (16 channels), 'SG Driver' (64 channels), and 'MultiRack' (128 channels). The 'SG Driver' row has a green arrow pointing to the 'ID' column. Below this is the 'SOUNDGRID SERVERS' section with a similar table listing one server: 'SG Server' with MAC address '00:1b:21:29:af:e6' and status 'On'.

e) Setting SoundGrid Connections

The Connections window table allows you to virtually connect the devices in your network and route audio between them.

Basic Connection Examples: your configuration might differ.

Processing and Direct Recording: connections for 16 channel processing and direct recording of show to DAW of your choice

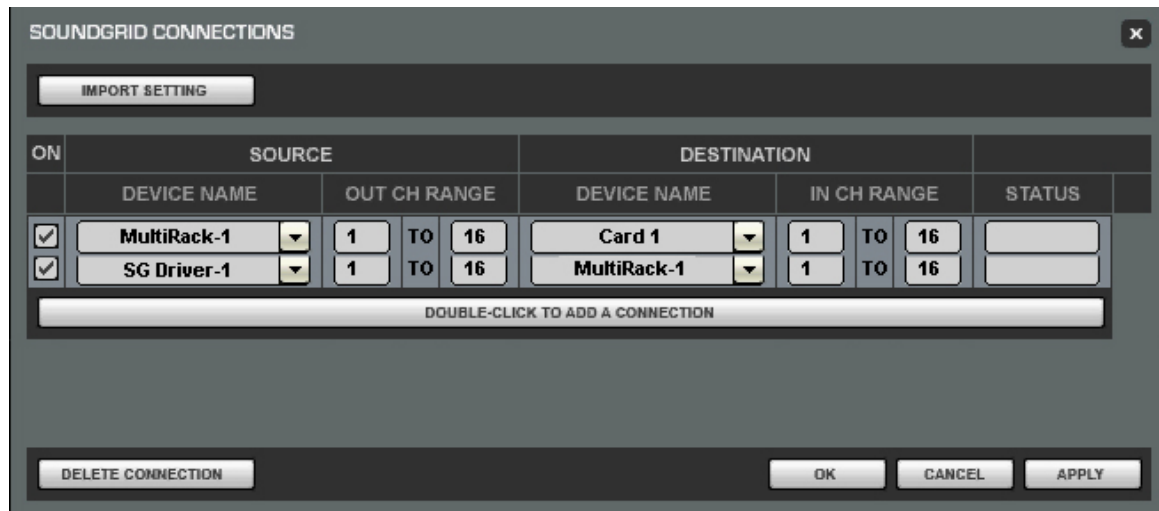
- Using the Edit Menu, access the SoundGrid Connection.
- Double-click to add a connection.
- Send WSG-Y16 card to MultiRack processing channels 1-16.
- Return MultiRack processing channels 1-16 to WSG-Y16 card.
- Send WSG-Y16 card to DAW recording channels 1-16.
- Make sure all created connections are turned on.
- Click Apply, then Save.



Virtual SoundCheck: Connections Used for Virtual SoundCheck.

Virtual SoundCheck allows playback of previously recorded shows from your DAW through MultiRack and your console, letting you adjust plugin and console settings.

- Using the Edit Menu, access the SoundGrid Connection.
- Double-click to add a connection.
- Send DAW channels 1-16 to MultiRack processing channels 1-16
- Return MultiRack processing channels 1-16 to WSG-Y16 card chan. 1-16
- Make sure all created connections are turned on.
- Click Apply, then Save.



Now you ready add Racks, set Routing, and add plugins.

Please refer to MultiRack SoundGrid manual for in-depth instructions.

 **WAVESLIVE**

www.waveslive.com